



MTO 7.1 Examples: Horlacher, Bartók's "Change of Time": Coming Unfixed

(Note: audio, video, and other interactive examples are only available online)

<http://www.mtosmt.org/issues/mto.01.7.1/mto.01.7.1.horlacher.php>

Example 1. "Change of Time"

part 1 *Allegro pesante*, ♩ = 250

part 2 antecedent (5 + 5) consequent (5 + 5)

f *sf* *sf* *p* *sf* *sf* *sf*

cresc. *ff* *Red.* *

(sim.) (sim.) (sim.) (sim.)

[40 sec.]

Detailed description: The score is divided into two parts. Part 1 (measures 1-13) is in 2/4 time, marked *Allegro pesante* with a tempo of ♩ = 250. It features a piano introduction with dynamics *f* and *sf*. Part 2 (measures 14-28) is divided into an antecedent (measures 14-19) and a consequent (measures 20-28), both marked (5 + 5). The antecedent contains dynamics *sf*, *p*, and *sf*. The consequent contains dynamics *sf*, *sf*, and *sf*. Measure 21 includes a *cresc.* marking. The piece concludes with a *ff* dynamic and a *Red.* (ritardando) marking, followed by a 40-second recording time indicator.

Example 1: "Change of Time"

Example 3A. Rebarred in 3/4

Example 3A: Rebarred in 3/4

Example 3B. An Altered Grid

part 1 *Allegro pesante*, ♩ = 250

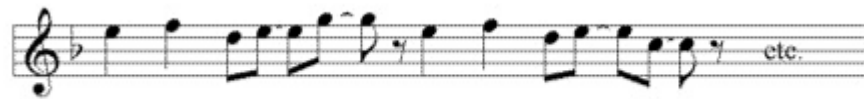
Example 3B: An Altered Grid

Example 3C. Hypermetrical Hemiola

part 1 *Allegro pesante*, ♩ = 250

Example 3C: Hypermetrical Hemiola

Example 5A. Part 2 Rebarred in Quarter Notes



Example 5A: Part 2 Rebarred in Quarter Notes

Example 5B. An Altered Grid for Part 2



Example 5B: An Altered Grid for Part 2