



## MTO 12.1 Examples: Byron, The Test Pressings of Schoenberg Conducting

(Note: audio, video, and other interactive examples are only available online)

<http://www.mtosmt.org/issues/mto.06.12.1/mto.06.12.1.byron.php>

**Table 1.** List of test pressings (for songs with more than one test pressing)

Song name	Song number	Number of test pressings	Duration
Eine blasse Wäscherin	4	4	1'11", 1'08", 1'05", 1'09"
Valse de Chopin	5		1'20", 1'18", 1'16", 1'17"
Madonna	6		1'49", 1'47", 1'48", 1'51"
Gebet an Pierrot	9	3	0'50", 0'52", 0'51"
Raub	10		0'59", 0'59", 0'59"
Rote Messe	11		1'51", 1'55", 1'55"
Galgenlied	12		0'14", 0'14", 0'14"
Mondestrunken	1	2	1'30", 1'35"
Colombine	2		1'34", 1'38"
Der Dandy	3		1'20", 1'22"
Enthauptung	13		2'06", 1'59"
Die Kreuze	14		2'03", 2'03"

**Example 1.** *Sprechstimme* in *Gurrelieder* (this example is from 1900)

A handwritten musical score on aged paper for the 'Sprechstimme' part of 'Gurrelieder'. The score is written in ink and features five staves. The top staff is labeled 'Sprechstimme' and contains the lyrics 'Der Gott der himmel ist = un'. Below it are staves for '1. Bass Clarinet', 'Violoncello', '1. Tg.', '2. Violoncello', and 'Basso Continuo'. The notation includes various rhythmic values, accidentals, and dynamic markings.

(full image available at [www.schoenberg.at/scans/ms60/MS60/2281.jpg](http://www.schoenberg.at/scans/ms60/MS60/2281.jpg))

**Example 2.** *Sprechstimme* in *Ode to Napoleon* (1942)

A handwritten musical score on aged paper for the 'Sprechstimme' part of 'Ode to Napoleon'. The score is written in ink and features five staves. The top staff is labeled 'the earlignate voice' and contains the lyrics 'at 1st. at 1st.'. Below it are staves for '1. Bass Clarinet', 'Violoncello', '1. Tg.', '2. Violoncello', and 'Basso Continuo'. The notation includes various rhythmic values, accidentals, and dynamic markings.

(full image available at [www.schoenberg.at/scans/Ms45/Ms45/815.jpg](http://www.schoenberg.at/scans/Ms45/Ms45/815.jpg))

**Example 3.** *Sprechstimme* in *A Survivor from Warsaw* (1947)

(full image available at [www.schoenberg.at/scans/MS50/MS50/954.jpg](http://www.schoenberg.at/scans/MS50/MS50/954.jpg))

**Example 4.** *Sprechstimme* in *Modern Psalm* (1950)

(full image available at [www.schoenberg.at/scans/MS56/MS56/3286v.jpg](http://www.schoenberg.at/scans/MS56/MS56/3286v.jpg))

**Example 5.** Notation of *Sprechstimme* without note heads in *Pierrot lunaire* in 'Der Dandy'

(full image available at [www.schoenberg.at/scans/MS21/MS21/Foto\\_Reinschrift/7.jpg](http://www.schoenberg.at/scans/MS21/MS21/Foto_Reinschrift/7.jpg))

**Figure 1.** Comparison of *Sprechstimme* in the four test pressings of “Eine blasse Wäscherin”

The image displays a musical score for the song "Eine blasse Wäscherin". It consists of five staves, each in a treble clef. The first staff is the printed score, starting at measure 5. It features a melodic line with eighth and sixteenth notes, including three triplet markings. The lyrics "Ei - ne blas - se Wä - sche - rin wäscht - zur Nacht - zeit blei - che" are written below the notes. The following four staves, labeled "Test Press. 1" through "Test Press. 4", show the same melodic line but with different rhythmic interpretations, illustrating the concept of *Sprechstimme* (speech-song).

Score

5

Ei - ne blas - se Wä - sche - rin wäscht - zur Nacht - zeit blei - che

Test Press. 1

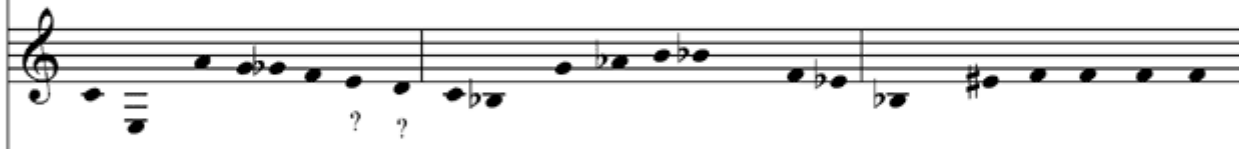
Test Press. 2


Test Press. 3


Test Press. 4

S.  Tü-cher nack-te, sil-ber-wei-be Ar-me streckt sie nie-der \_ in die Flut. Durch die Lichtungschleie

TP1  ?

TP2  ? ?

TP3  ? ?

TP4 

Detailed description: This image shows a page of a musical score for a vocal soloist and a four-piece trumpet section. The vocal part (S.) is written in a soprano clef and features a complex melodic line with many sixteenth and thirty-second notes, including a triplet. The lyrics are in German. The trumpet parts (TP1-TP4) are written in a soprano clef and consist of a single melodic line with some rests and question marks indicating missing notes. The key signature has one flat (B-flat), and the time signature is not explicitly shown but appears to be 3/4.

10

S.

Win-de, leis be-we-gen sie den Strom. Ei-ne blas-se Wä - sche-rin wäscht zur Nacht-zeit bleiche

TP1

TP2

TP3

TP4

15 gesprochen

S.

auf die dunk - len Wie - sen ih - re licht - ge - wo - be - nen Lin - nen ei - ne blas - se Wä - sche - rin

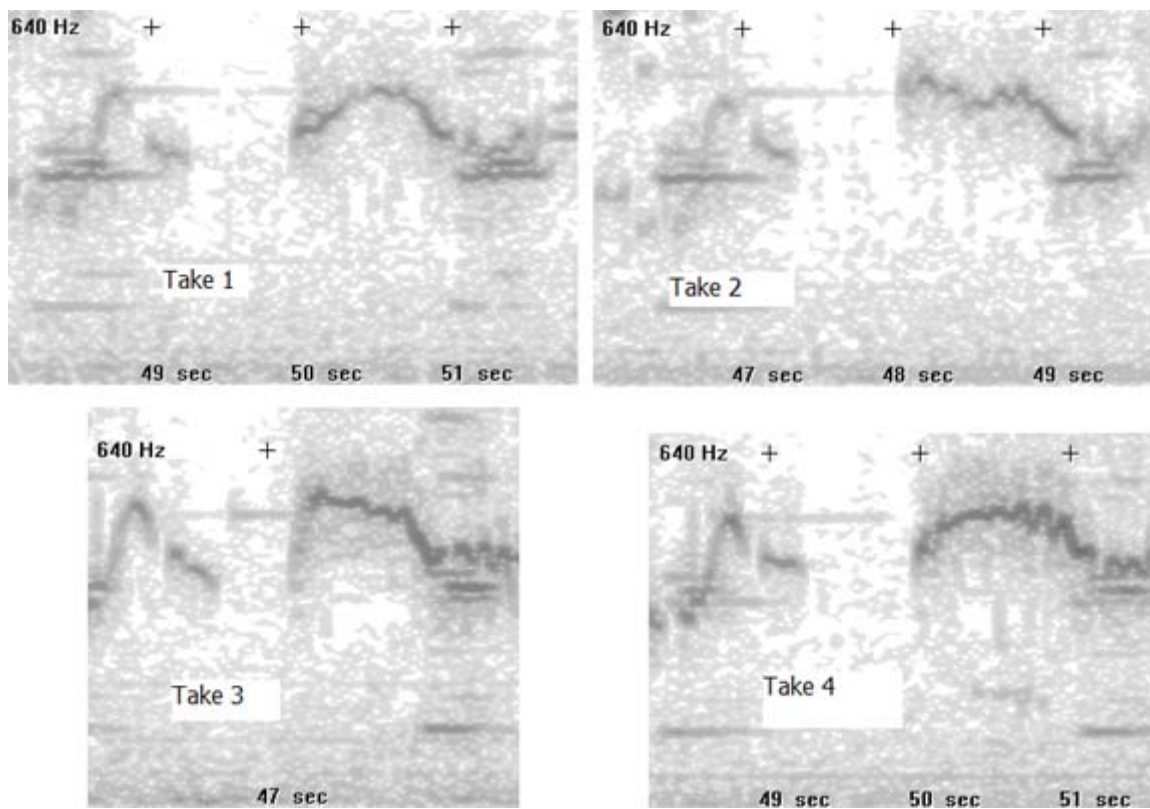
TP1

TP2

TP3

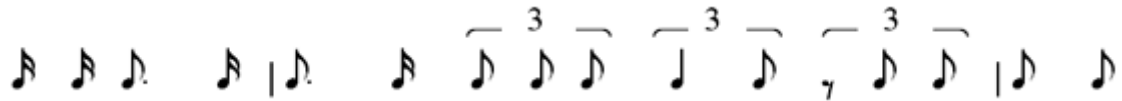
TP4

**Figure 2.** “Eine blasse Wäscherin,” m. 14, observance phrase peaks





**Figure 3.** “Eine blasse Wäscherin,” rhythm in first phrase



Take 1

Ei- ne blas- se Wä- sche- rin wäschtzur Nacht-zeit blei- che Tü- cher

Take 2

Ei- ne blas- se Wä- sche- rin wäschtzur Nacht-zeit blei- che Tü- cher

Take 3

Ei- ne blas- se Wä- sche- rin wäschtzur Nachtzeit blei- che Tü- cher

Take 4

Ei- ne blas- se- Wä- sche-rin wäschtzurNacht- zeit blei- cheTü- cher